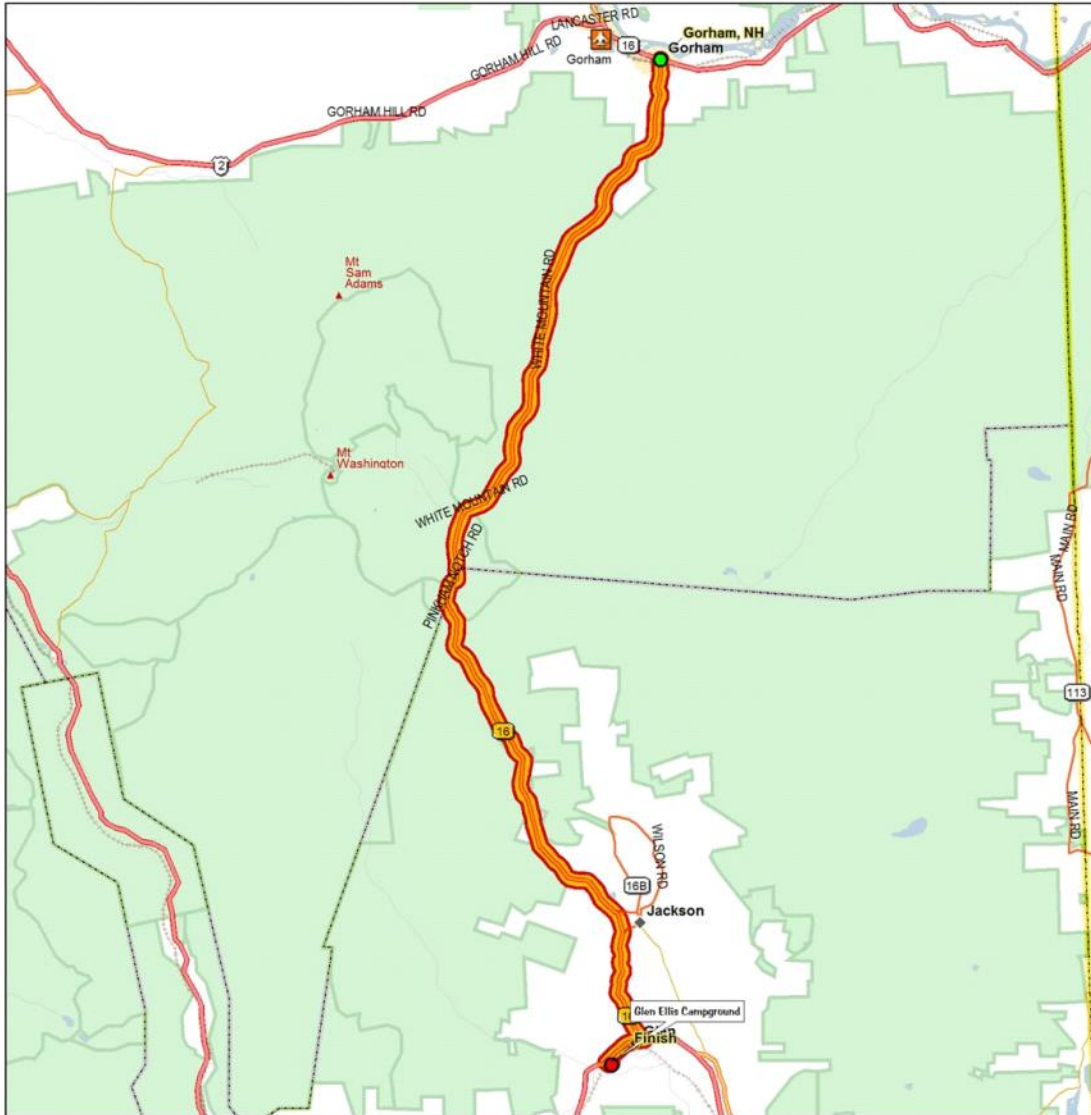




Gorham, NH to Finish - Overview

Street Atlas USA® 2006



Trip Distance: 23.42 mi

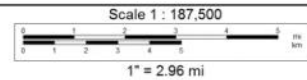
Trip Time: 00:34:56

Start: Gorham, NH

Total Stops: 0

Finish: Finish

Data use subject to license.
© 2005 DeLorme. Street Atlas USA® 2006.
www.delorme.com





	Dist	Turn		Road	Exit	Finish Time	Finish Dist
		Start	at	Gorham, NH		00:34:56	23.42 mi
		Go straight (SSW)	on	Glen Rd		00:34:56	23.42 mi
	in 0.01 mi	Go straight (S)	on to	SR 16 (Glen Rd)		00:34:55	23.41 mi
	in 22.39 mi	Turn right (WSW)	on to	US 302 (Crawford Notch Rd)		00:01:27	1.03 mi
	in 0.89 mi	Turn left (ESE)	on to	<unnamed>		00:00:19	0.13 mi
	in 0.13 mi	Finish	at	Finish		00:00:00	0.00 mi

Total Time: 00:34:56 Total Distance: 23.42 mi