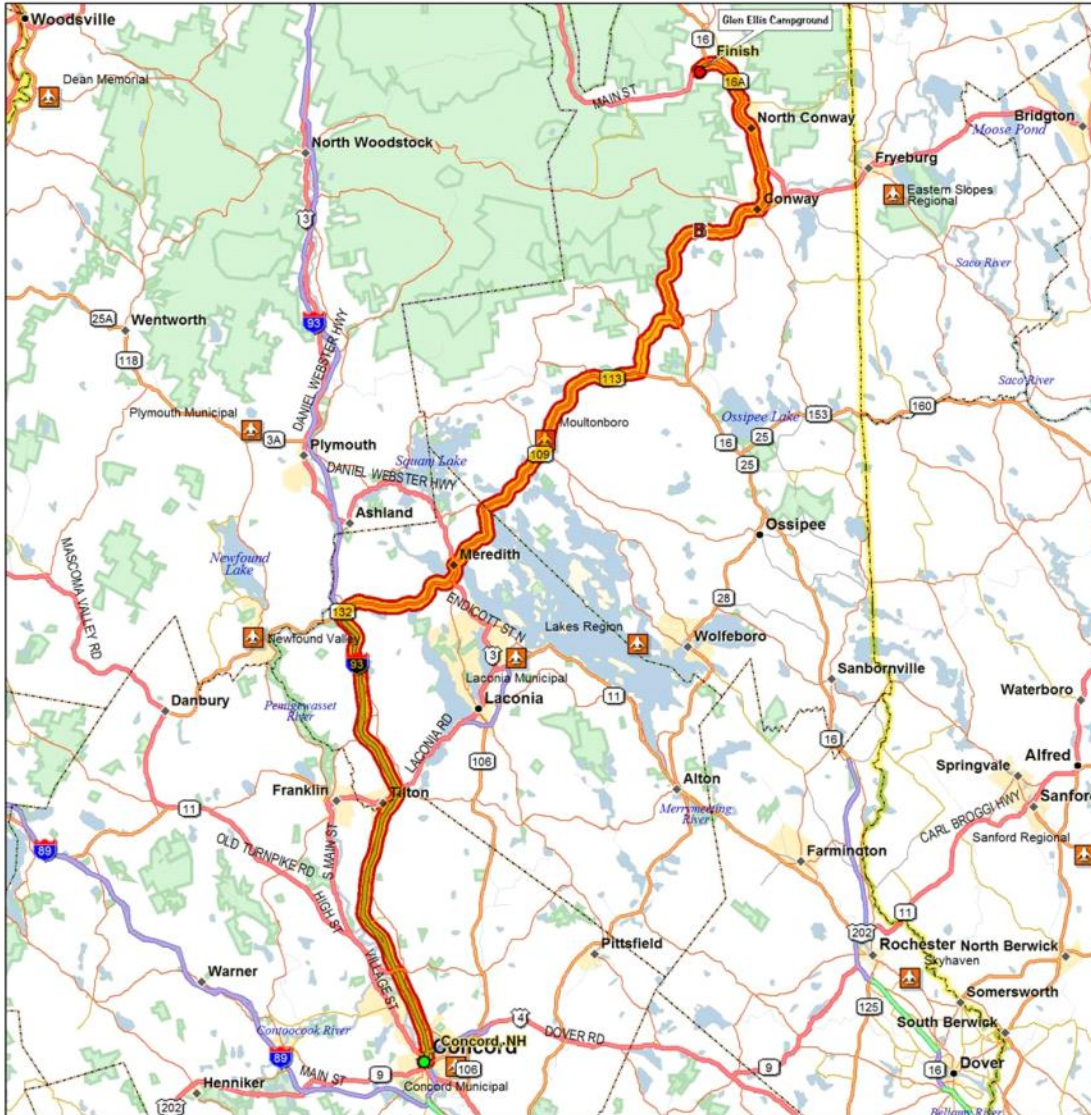




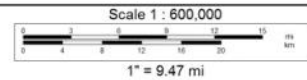
Concord, NH to Finish - Overview

Street Atlas USA® 2006



Trip Distance: 88.49 mi  
Trip Time: 02:03:01  
Start: Concord, NH  
Total Stops: 0  
Finish: Finish

Data use subject to license.  
© 2005 DeLorme. Street Atlas USA® 2006.  
www.delorme.com



	Dist	Turn		Road	Exit	Finish Time	Finish Dist
		Start	at	Concord, NH		02:03:01	88.49 mi
		Go straight (NNW)	on	<unnamed>		02:03:01	88.49 mi
	in 0.01 mi	Turn right (ENE)	on to	Centre St		02:02:59	88.48 mi
	in 0.04 mi	Go straight (E)	on to	SR 9 (Bridge St)		02:02:53	88.44 mi
	in 0.20 mi	Turn left (N)	on to	I-93 N (Sen Styles Bridges H...		02:02:24	88.24 mi
	in 0.03 mi	Keep left (N)	on	I-93 N (Sen Styles Bridges H...		02:02:19	88.20 mi
	in 30.49 mi	Keep right (N)	on to	SR 104 (SR 132) ramp	23	01:30:58	57.71 mi
	in 0.26 mi	Keep right (N)	on	SR 104 (SR 132) ramp		01:30:35	57.45 mi
	in 0.04 mi	Keep right (ENE)	on to	SR 104 (SR 132)		01:30:32	57.41 mi
	in 8.28 mi	Keep left (N)	on to	US 3 (Daniel Webster Hwy)		01:18:47	49.14 mi
	in 0.93 mi	Turn right (NE)	on to	SR 25 (Whittier St)		01:17:36	48.21 mi
	in 19.00 mi	Keep left (NE)	on to	SR 113 (Tamworth Rd)		00:46:31	29.21 mi
	in 5.33 mi	Turn left (NNE)	on to	SR 16 (SR 25 White Mountai...		00:37:31	23.88 mi
	in 14.74 mi	Keep left (NNW)	on to	US 302 (SR 16 White Mount...		00:14:11	9.14 mi
	in 9.01 mi	Turn left (ESE)	on to	<unnamed>		00:00:19	0.13 mi
	in 0.13 mi	Finish	at	Finish		00:00:00	0.00 mi

**Total Time: 02:03:01 Total Distance: 88.49 mi**